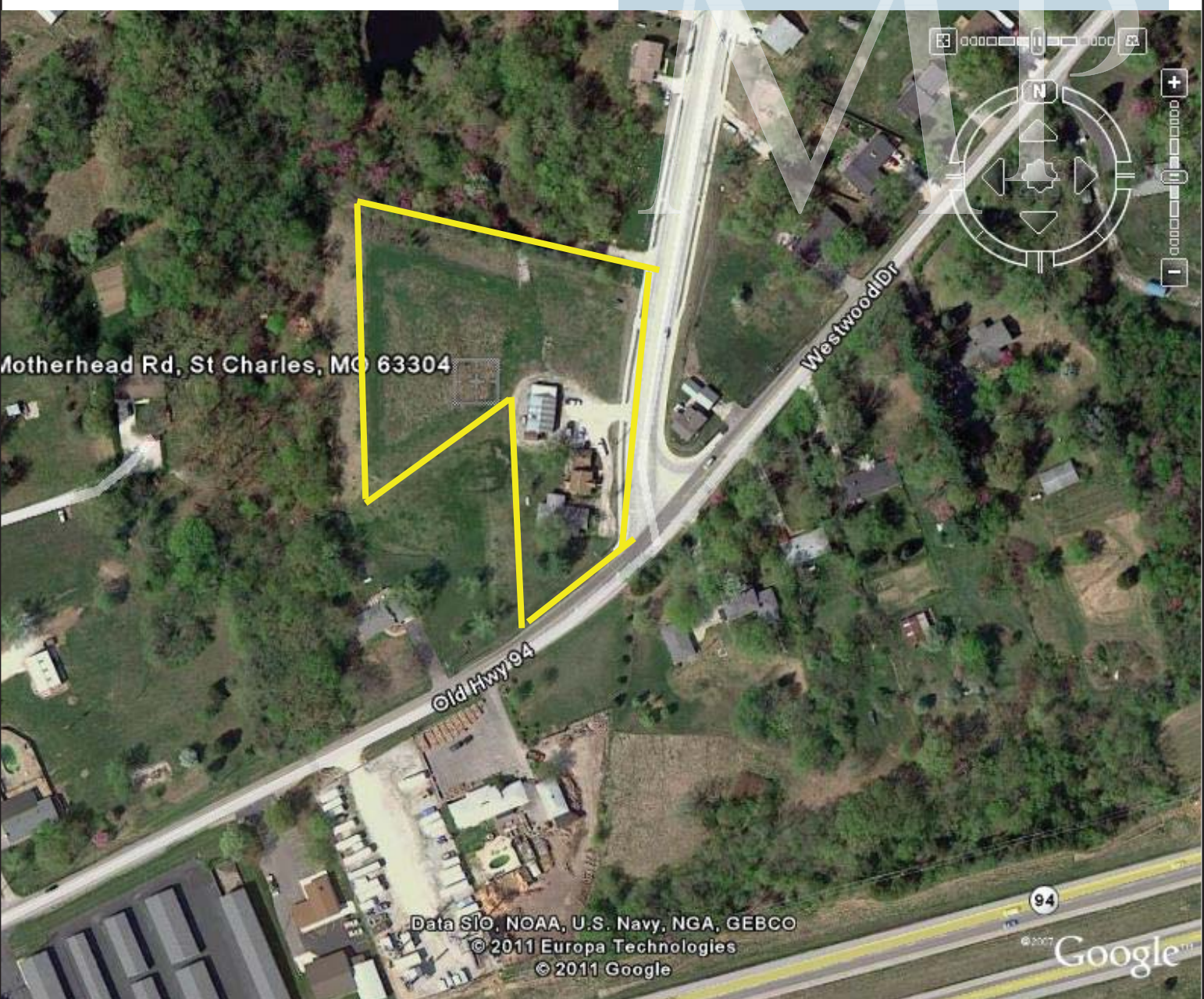


LAND FOR SALE

903 Motherhead Road
St. Charles, MO 63304



Matthew Humphrey

mhumphrey@mckelveyproperties.com

636-751-1073 mobile

636-669-9111 office

636-669-9117 fax

2154 Bluestone Drive

St. Charles, Missouri 63303

www.mckelveyproperties.com



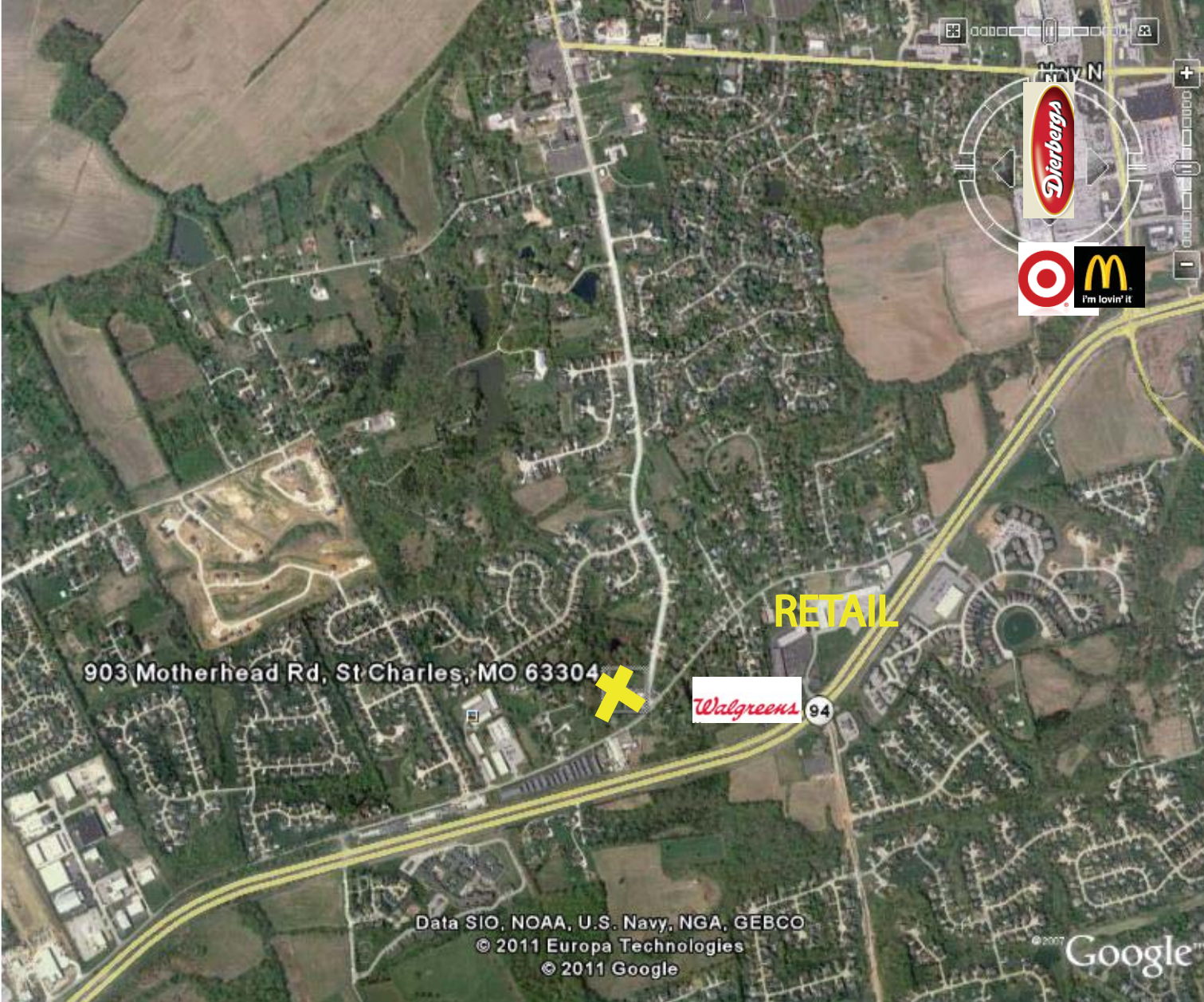
MCKELVEY PROPERTIES
building relationships . creating wealth

Lot Size	3.16 acres
Frontage	Approx. 205' along Westwood Approx. 350' along Motherhead
Zoning	Residential - rezone to Commercial
Municipality	City of Cottleville
Topography	Level
Taxes	\$2,828.00 (2010)
Sale Price	\$515,000.00

No expressed or implied warranty or representation is made as to the accuracy of the information contained herein. This property is submitted subject to errors, omissions, change of price, withdrawal without notice, prior lease or sale and any other listing conditions imposed by the principals.

903 MOTHERHEAD ROAD
ST. CHARLES, MO 63304

MP



No expressed or implied warranty or representation is made as to the accuracy of the information contained herein. This property is submitted subject to errors, omissions, change of price, withdrawal without notice, prior lease or sale and any other listing conditions imposed by the principals.

LAND FOR SALE




903 MOTHERHEAD ROAD
ST. CHARLES, MO 63304



903 Motherhead Rd, St Charle...

Latitude: 38.728161
Longitude: -90.650665

Ring: 1, 3, 5 Miles

	1 mile radius	3 miles radius	5 miles radius
 2000 Total Population	5,287	39,934	124,738
2000 Group Quarters	137	288	555
2010 Total Population	5,676	47,725	152,343
2015 Total Population	5,880	51,446	164,354
2010 - 2015 Annual Rate	0.71%	1.51%	1.53%
 2000 Households	1,718	12,942	41,739
2000 Average Household Size	3	3.06	2.98
2010 Households	1,933	16,026	52,235
2010 Average Household Size	2.87	2.96	2.91
2015 Households	2,028	17,423	56,664
2015 Average Household Size	2.83	2.94	2.89
2010 - 2015 Annual Rate	0.96%	1.69%	1.64%
2000 Families	1,478	10,998	34,363
2000 Average Family Size	3.27	3.35	3.3
2010 Families	1,616	13,231	42,042
2010 Average Family Size	3.19	3.3	3.27
2015 Families	1,674	14,217	45,163
2015 Average Family Size	3.18	3.29	3.28
2010 - 2015 Annual Rate	0.71%	1.45%	1.44%
 2000 Housing Units	1,745	13,238	42,633
Owner Occupied Housing Units	91.0%	89.8%	89.0%
Renter Occupied Housing Units	7.2%	7.8%	8.8%
Vacant Housing Units	1.6%	2.4%	2.2%
2010 Housing Units	1,987	16,683	54,282
Owner Occupied Housing Units	88.0%	86.6%	86.2%
Renter Occupied Housing Units	9.3%	9.5%	10.0%
Vacant Housing Units	2.7%	3.9%	3.8%
2015 Housing Units	2,100	18,347	59,667
Owner Occupied Housing Units	86.9%	85.4%	85.1%
Renter Occupied Housing Units	9.6%	9.6%	9.9%
Vacant Housing Units	3.4%	5.0%	5.0%
Median Household Income			
2000	\$81,295	\$68,288	\$63,813
2010	\$105,836	\$92,241	\$86,200
2015	\$119,043	\$106,253	\$102,795
Median Home Value			
2000	\$179,294	\$146,274	\$125,164
2010	\$281,273	\$217,945	\$187,016
2015	\$328,460	\$261,523	\$229,610
Per Capita Income			
2000	\$32,600	\$26,010	\$24,032
2010	\$43,163	\$35,812	\$33,436
2015	\$47,788	\$39,296	\$36,814
Median Age			
2000	37.4	33.4	33.2
2010	40.6	33.9	33.9
2015	39.5	33.8	33.7

Data Note: Household population includes persons not residing in group quarters. Average Household Size is the household population divided by total households. Persons in families include the householder and persons related to the householder by birth, marriage, or adoption. Per Capita Income represents the income received by all persons aged 15 years and over divided by total population. Detail may not sum to totals due to rounding.

Source: U.S. Bureau of the Census, 2000 Census of Population and Housing. Esri forecasts for 2010 and 2015.

