

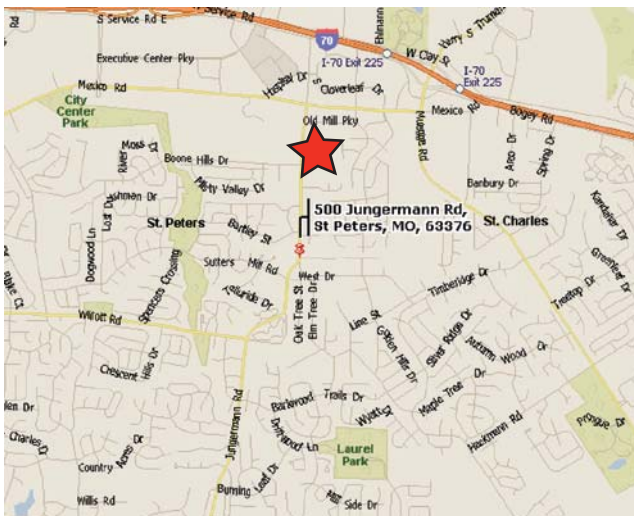
# OFFICE / RETAIL FOR SALE OR LEASE

500 JUNGERMANN RD  
ST. PETERS, MISSOURI 63376

# MP



This established center is conveniently located between Highway 94 and Mexico Road with access to Interstate 70.



## Available Suites

- Suite 101 - 650 sf @ \$770/Month Full Service
- Suite 102 - 150 sf @ \$180/Month Full Service
- Suite 201 - 576 sf @ \$650/Month Full Service
- Suite 304 - 144 sf @ \$180/Month Full Service
- Suite 305 - 144 sf @ \$180/Month Full Service
- Suite 308 - 144 sf @ \$180/Month Full Service
- Suite 310 - 297 sf @ \$315/Month Full Service
- Sale Price - \$950,000.00

## Contact

Shari Nevels  
636-448-1293 cell

snevels@mckelveyproperties.com

636-669-9111 office  
636-669-9117 fax

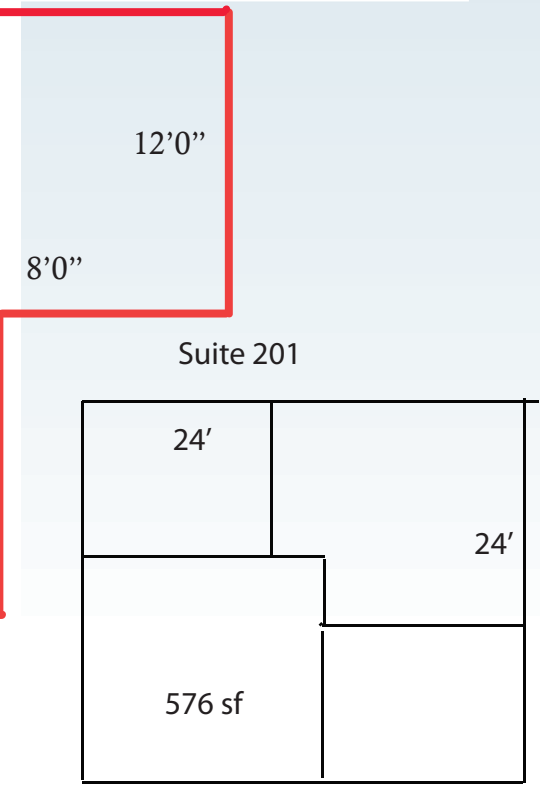
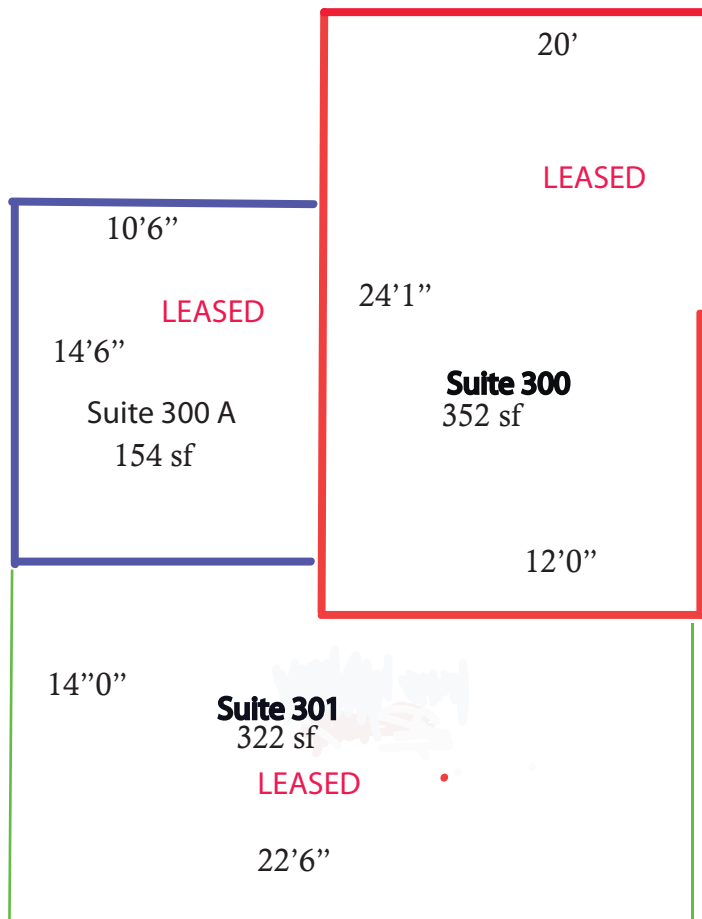
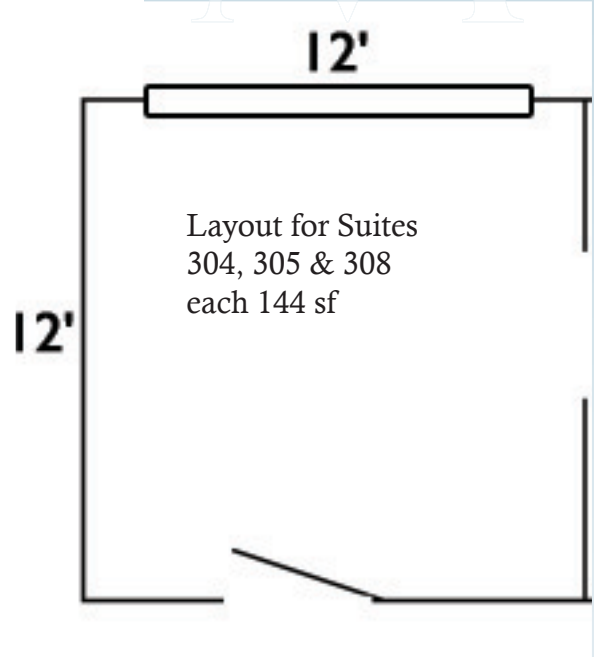
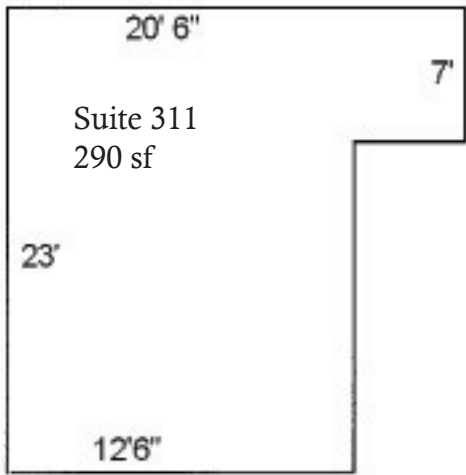


**MCKELVEY PROPERTIES**  
building relationships . creating wealth

www.mckelveyproperties.com  
2154 Bluestone Dr.  
St. Charles, MO 63303

OFFICE / RETAIL FOR LEASE

500 JUNGERMANN RD  
ST. PETERS, MISSOURI 63376

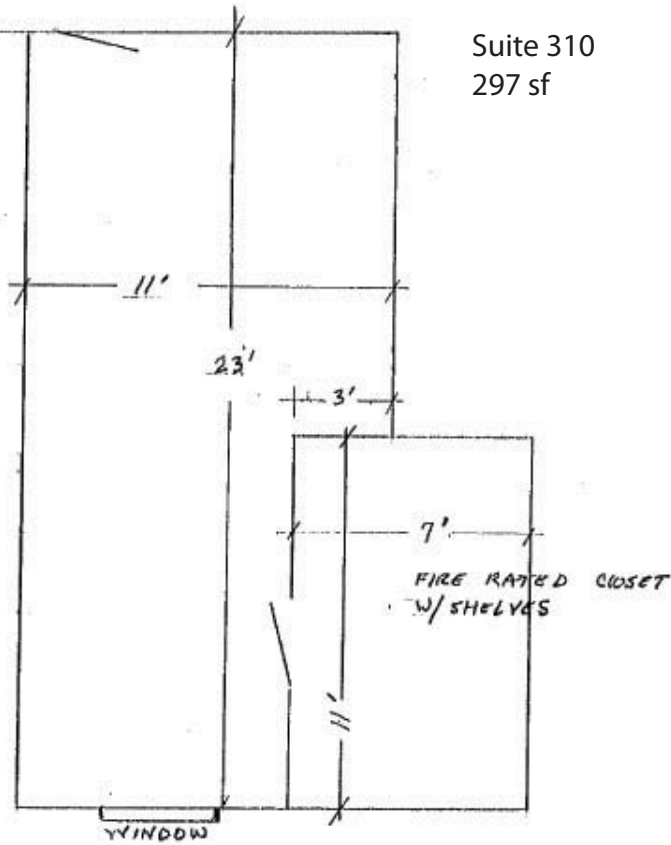


OFFICE / RETAIL FOR LEASE

500 JUNGERMANN RD  
ST. PETERS, MISSOURI 63376



Suite 310  
297 sf



Unit 101 and 102






500 JUNGERMANN RD  
ST. PETERS, MISSOURI 63376



500 Jungermann Rd, Saint Pet...

Latitude: 38.781718  
Longitude: -90.577075  
Site Type: Ring

	Radius: 1 Miles	Radius: 3 Miles	Radius: 5 Miles
 2000 Total Population	11,136	78,758	161,879
2000 Group Quarters	30	285	2,805
2009 Total Population	11,994	81,572	175,030
2014 Total Population	12,476	84,836	182,943
2009 - 2014 Annual Rate	0.79%	0.79%	0.89%
 2000 Households	3,886	28,239	59,294
2000 Average Household Size	2.86	2.71	2.68
2009 Households	4,368	31,357	66,748
2009 Average Household Size	2.74	2.59	2.58
2014 Households	4,595	33,033	70,519
2014 Average Household Size	2.71	2.56	2.55
2009 - 2014 Annual Rate	1.02%	1.05%	1.11%
2000 Families	3,037	20,933	43,336
2000 Average Family Size	3.27	3.17	3.16
2009 Families	3,260	22,112	46,576
2009 Average Family Size	3.21	3.11	3.11
2014 Families	3,348	22,692	48,018
2014 Average Family Size	3.22	3.11	3.11
2009 - 2014 Annual Rate	0.53%	0.52%	0.61%
 2000 Housing Units	3,921	28,971	61,007
Owner Occupied Housing Units	85.0%	78.6%	76.4%
Renter Occupied Housing Units	13.9%	18.9%	20.7%
Vacant Housing Units	1.0%	2.6%	2.9%
2009 Housing Units	4,445	32,716	69,962
Owner Occupied Housing Units	82.7%	74.4%	72.9%
Renter Occupied Housing Units	15.6%	21.5%	22.6%
Vacant Housing Units	1.7%	4.2%	4.6%
2014 Housing Units	4,680	34,553	74,092
Owner Occupied Housing Units	82.2%	73.6%	72.3%
Renter Occupied Housing Units	16.0%	22.0%	22.9%
Vacant Housing Units	1.8%	4.4%	4.8%
<b>Median Household Income</b>			
2000	\$59,986	\$57,189	\$55,760
2009	\$75,771	\$72,914	\$72,179
2014	\$80,634	\$76,261	\$75,528
<b>Median Home Value</b>			
2000	\$114,852	\$114,070	\$115,416
2009	\$175,000	\$173,489	\$176,761
2014	\$215,283	\$212,216	\$216,198
<b>Per Capita Income</b>			
2000	\$22,172	\$23,587	\$23,490
2009	\$29,707	\$31,794	\$31,962
2014	\$30,881	\$33,097	\$33,315
<b>Median Age</b>			
2000	35.1	34.8	34.7
2009	37.1	36.4	36.1
2014	37.2	36.6	36.2

Data Note: Household population includes persons not residing in group quarters. Average Household Size is the household population divided by total households. Persons in families include the householder and persons related to the householder by birth, marriage, or adoption. Per Capita Income represents the income received by all persons aged 15 years and over divided by total population. Detail may not sum to totals due to rounding.

Source: U.S. Bureau of the Census, 2000 Census of Population and Housing. ESRI forecasts for 2009 and 2014.

