

Great Location! Full service office building near the intersection at Interstate 70 and Highway 94



Building Size 11,287 sf
Parking Ratio 4/1000
Space Available Suite 3 - 508 sq. ft.
\$600/month Full Service

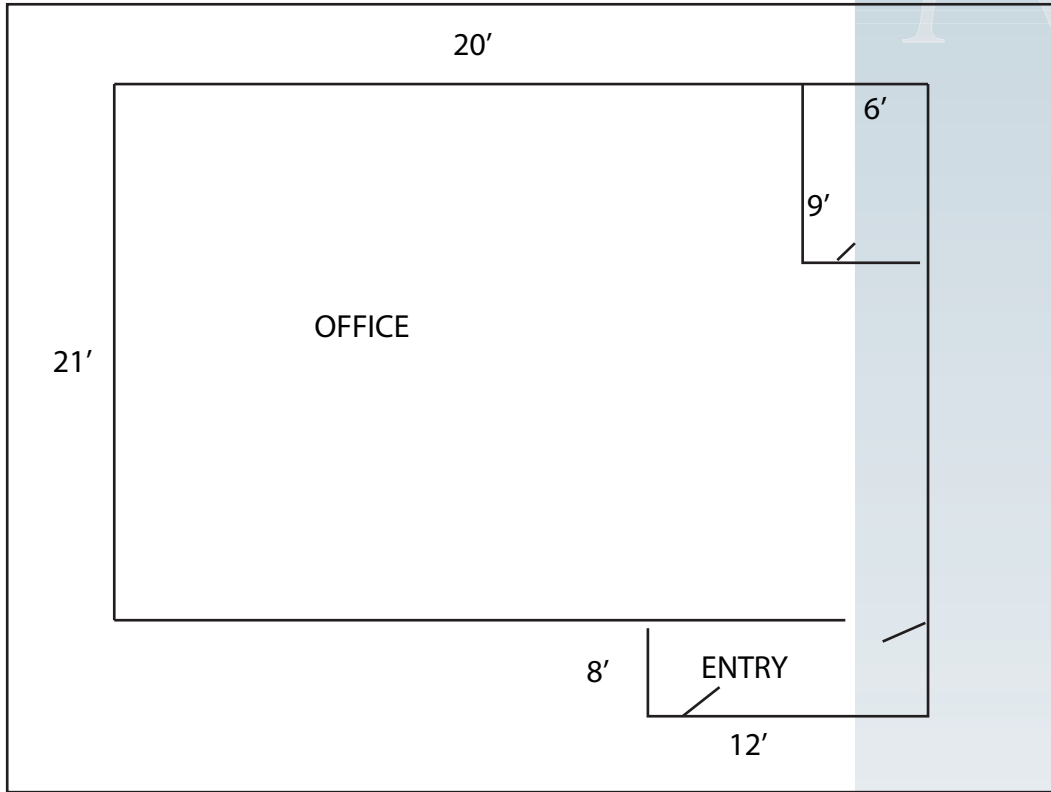


MCKELVEY PROPERTIES
building relationships . creating wealth

Shari Nevels / Jessica Obermann
snevels@mckelveyproperties.com
jobermann@mckelveyproperties.com
636-448-1293 mobile / 816-739-6721
636-669-9111 office 636-669-9117 fax
2154 Bluestone Drive, St. Charles, Missouri 63303
www.mckelveyproperties.com

OFFICE FOR LEASE

1811 SHERMAN DRIVE
ST. CHARLES, MISSOURI 63303



SUITE 3 - 508 Total sf Available






1811 SHERMAN DRIVE
ST. CHARLES, MISSOURI 63303



1811 Sherman Square Dr, Sain...

Latitude: 38.771644
Longitude: -90.514748
Site Type: Ring

	Radius: 1 Miles	Radius: 3 Miles	Radius: 5 Miles
 2000 Total Population	13,545	73,013	131,339
2000 Group Quarters	172	2,769	3,147
2009 Total Population	14,342	77,091	140,124
2014 Total Population	14,837	79,701	145,346
2009 - 2014 Annual Rate	0.68%	0.67%	0.73%
 2000 Households	6,254	28,846	50,629
2000 Average Household Size	2.14	2.44	2.53
2009 Households	6,823	31,742	56,212
2009 Average Household Size	2.08	2.34	2.44
2014 Households	7,121	33,199	58,947
2014 Average Household Size	2.06	2.32	2.41
2009 - 2014 Annual Rate	0.86%	0.9%	0.95%
2000 Families	3,359	18,641	34,753
2000 Average Family Size	2.81	3.02	3.07
2009 Families	3,349	19,261	36,540
2009 Average Family Size	2.83	2.99	3.03
2014 Families	3,341	19,493	37,228
2014 Average Family Size	2.85	3	3.04
2009 - 2014 Annual Rate	-0.05%	0.24%	0.37%
 2000 Housing Units	6,567	30,000	52,280
Owner Occupied Housing Units	46.4%	64.7%	72.9%
Renter Occupied Housing Units	48.7%	31.4%	23.9%
Vacant Housing Units	4.9%	3.9%	3.2%
2009 Housing Units	7,373	33,824	59,272
Owner Occupied Housing Units	41.7%	60.2%	69.1%
Renter Occupied Housing Units	50.8%	33.6%	25.7%
Vacant Housing Units	7.5%	6.2%	5.2%
2014 Housing Units	7,719	35,482	62,353
Owner Occupied Housing Units	40.8%	59.5%	68.4%
Renter Occupied Housing Units	51.5%	34.0%	26.1%
Vacant Housing Units	7.7%	6.4%	5.5%
Median Household Income			
2000	\$40,894	\$48,255	\$52,721
2009	\$51,723	\$60,484	\$66,247
2014	\$52,952	\$68,489	\$85,158
Median Home Value			
2000	\$92,244	\$110,714	\$112,896
2009	\$140,160	\$170,845	\$168,604
2014	\$171,366	\$208,441	\$203,466
Per Capita Income			
2000	\$20,807	\$23,730	\$23,931
2009	\$27,938	\$31,449	\$31,731
2014	\$29,304	\$32,809	\$32,983
Median Age			
2000	33.4	35.6	35.7
2009	34.2	37.2	37.4
2014	34.2	37.4	37.6

Data Note: Household population includes persons not residing in group quarters. Average Household Size is the household population divided by total households. Persons in families include the householder and persons related to the householder by birth, marriage, or adoption. Per Capita Income represents the income received by all persons aged 15 years and over divided by total population. Detail may not sum to totals due to rounding.

Source: U.S. Bureau of the Census, 2000 Census of Population and Housing, ESRI forecasts for 2009 and 2014.

