




DEMOGRAPHICS

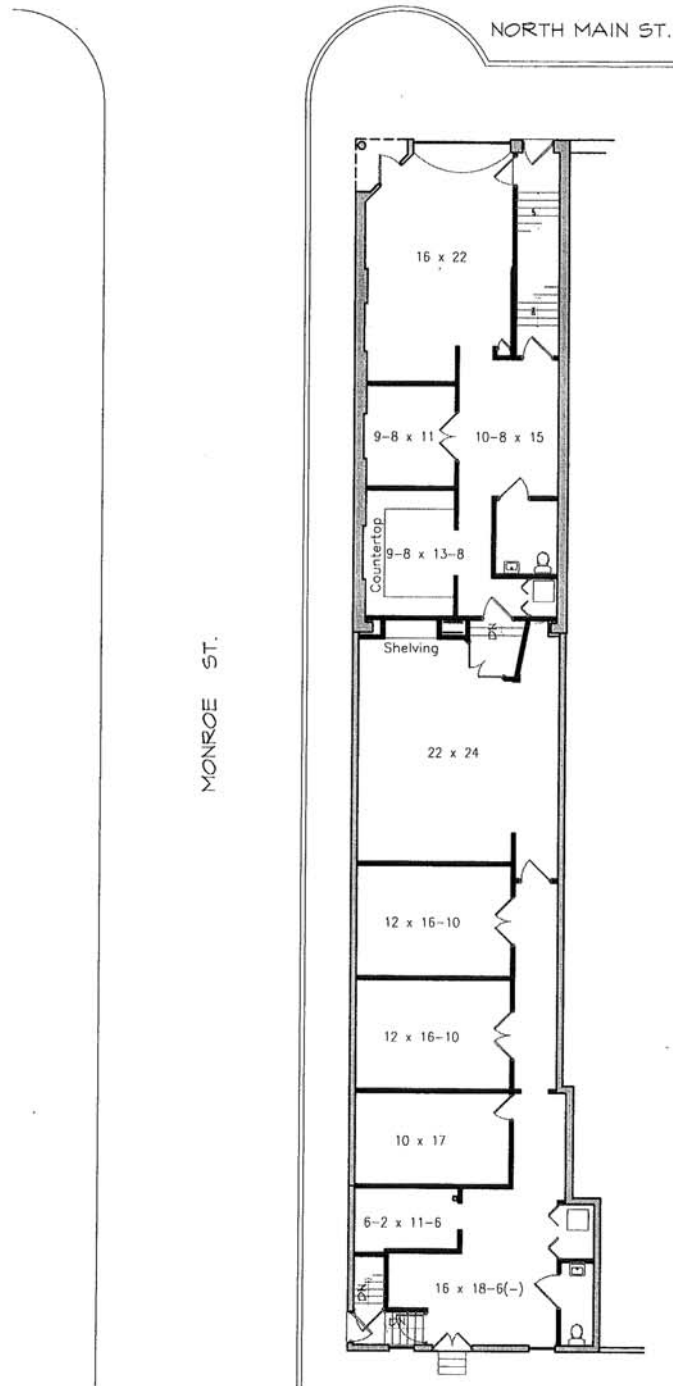
300 N Main Street
St. Charles, MO 63301



N Main	300 N Main St	300 N Main St	300 N Main St	
Latitude: 38.783019	Saint Charles, MO 63301	Saint Charles, MO 63301	Saint Charles, MO 63301	
Longitude: -90.480478	Radius: 1.0 mile	Radius: 3.0 mile	Radius: 5.0 mile	
	2000 Total Population	8,013	48,259	113,105
	2000 Group Quarters	598	2,710	3,207
	2008 Total Population	7,772	50,807	119,430
	2013 Total Population	7,981	54,369	126,929
	2008 - 2013 Annual Rate	0.53%	1.36%	1.23%
	2000 Households	3,406	19,963	45,279
	2000 Average Household Size	2.18	2.28	2.43
	2008 Households	3,411	21,744	49,434
	2008 Average Household Size	2.1	2.21	2.35
	2013 Households	3,543	23,547	53,087
	2013 Average Household Size	2.08	2.19	2.33
	2008 - 2013 Annual Rate	0.76%	1.61%	1.44%
	2000 Families	1,802	12,161	29,375
	2000 Average Family Size	2.9	2.88	3.01
	2008 Families	1,650	12,371	30,290
	2008 Average Family Size	2.94	2.9	3.01
	2013 Families	1,636	12,926	31,526
	2013 Average Family Size	2.98	2.93	3.04
	2008 - 2013 Annual Rate	-0.17%	0.88%	0.8%
	2000 Housing Units	3,637	20,881	47,255
	Owner Occupied Housing Units	53.1%	59.4%	66.7%
	Renter Occupied Housing Units	40.7%	36.3%	29.1%
	Vacant Housing Units	6.2%	4.4%	4.2%
	2008 Housing Units	3,680	22,879	52,059
	Owner Occupied Housing Units	49.0%	56.4%	64.0%
	Renter Occupied Housing Units	43.6%	38.7%	30.9%
	Vacant Housing Units	7.3%	5.0%	5.0%
	2013 Housing Units	3,807	24,754	56,060
	Owner Occupied Housing Units	47.7%	55.1%	62.7%
	Renter Occupied Housing Units	45.4%	40.0%	32.0%
	Vacant Housing Units	6.9%	4.9%	5.3%
	Median Household Income			
	2000	\$37,821	\$44,068	\$49,470
	2008	\$48,123	\$56,432	\$62,852
	2013	\$61,702	\$70,165	\$75,582
	Median Home Value			
	2000	\$88,428	\$101,556	\$108,139
	2008	\$139,612	\$164,494	\$161,189
	2013	\$145,853	\$172,822	\$171,969
	Per Capita Income			
	2000	\$20,660	\$22,155	\$23,833
	2008	\$25,619	\$29,685	\$31,543
	2013	\$31,260	\$36,492	\$38,209
	Median Age			
	2000	34.6	35.8	36.2
	2008	35.7	37.1	38.1
	2013	36.7	37.7	38.7

Data Note: Household population includes persons not residing in group quarters. Average Household Size is the household population divided by total households. Persons in families include the householder and persons related to the householder by birth, marriage, or adoption. Per Capita Income represents the income received by all persons aged 15 years and over divided by total population. Detail may not sum to totals due to rounding.

Source: U.S. Bureau of the Census, 2000 Census of Population and Housing. ESRI forecasts for 2008 and 2013.



First Floor Plan

1-18-2008 1/16"=1'-0"

**300 N. Main St.
St. Charles, Missouri 63301**

PLAN PREPARED BY STEWART, SCHABERG & TURNER ARCHITECTS LLC 314.918.0525