



MCKELVEY MARKETPLACE ST. PETERS, MO



PATRICIA MCKELVEY
636-448-1294 / cell
2154 Bluestone Drive,
St. Charles, Missouri 63303
636-669-9111 / office
636-669-9117 / fax



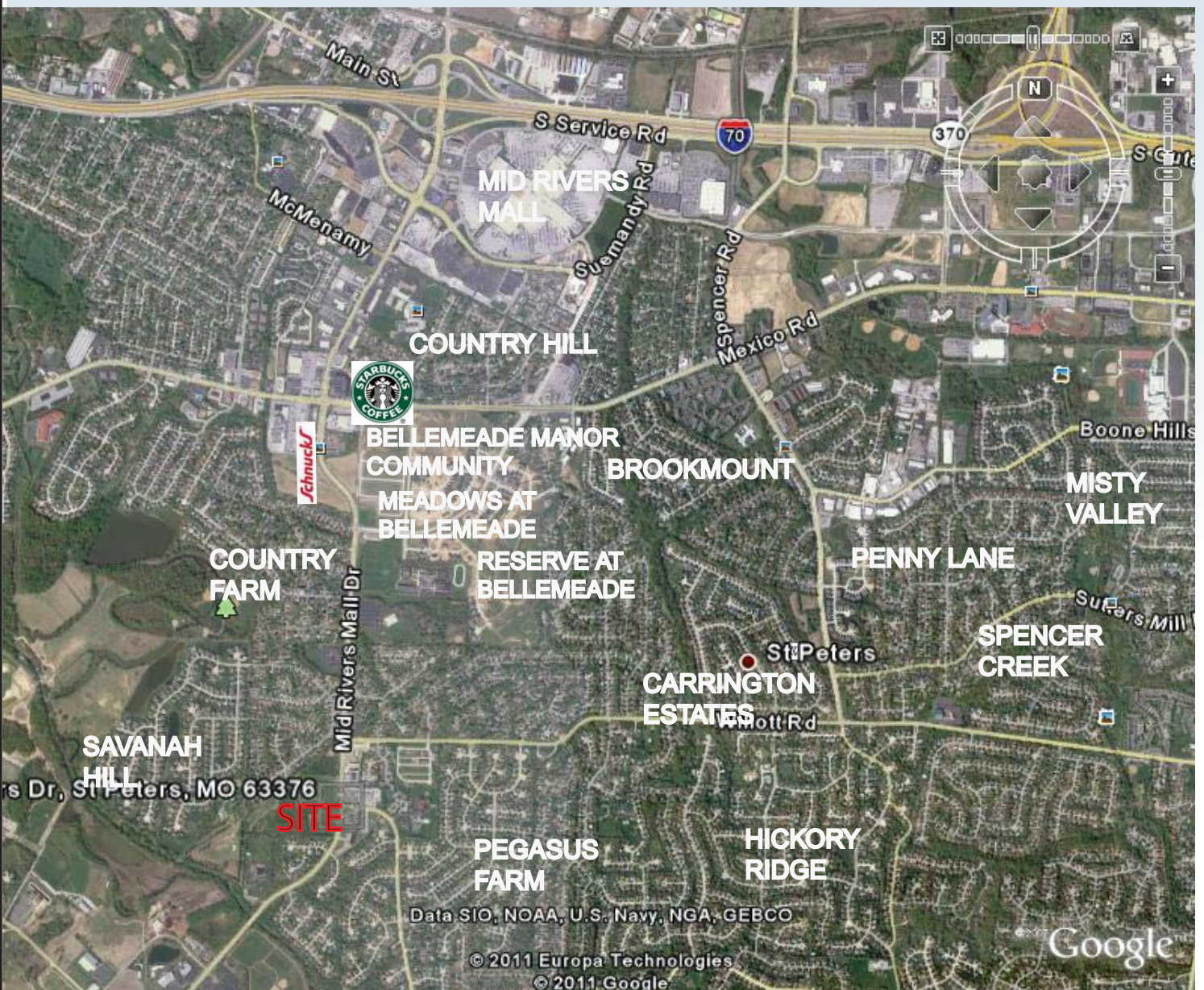
NOT ACTUAL PHOTO

MCKELVEY PROPERTIES
building relationships . creating wealth
www.mckelveyproperties.com

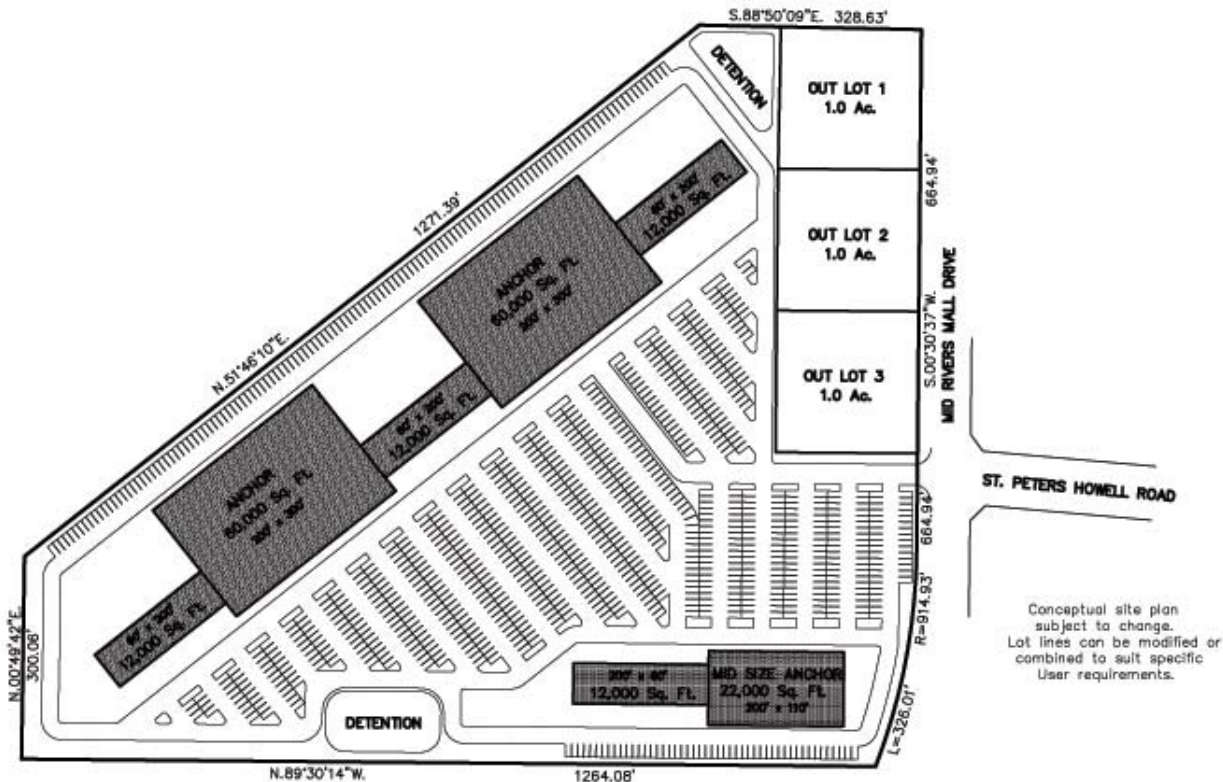
No expressed or implied warranty or representation is made as to the accuracy of the information contained herein. This property is submitted subject to errors, omissions, change of price, withdrawal without notice, prior lease or sale and any other listing conditions imposed by the principals.



RESIDENTIAL SUBDIVISIONS



MCKELVEY MARKETPLACE



City of St. Peters

St. Peters, Missouri, population of 52,575 (2010 U.S. Census), is a growing community situated perfectly in one of the state's fastest-growing counties, St. Charles County, just northwest of St. Louis County. St. Peters is less than 30 miles from downtown St. Louis City

LARGEST AREA EMPLOYERS

- * Barnes-Jewish St. Peters Hospital, 685
- * Fort Zumwalt School District R-II, 636
- * City of St. Peters, 522
- * Dierbergs (2 locations), 353
- * Francis Howell School District R-III, 347
- * Schnucks (2 locations), 256
- * Wal-Mart, 246
- * Reckitt & Benckiser Inc., 216
- * Macys, 196
- * United Services Inc., 123

* St. Peters Community has 20 parks, 1,000 acres of parkland and a system of paved trails for pedestrians and cyclists

* St. Peters is home to the world-class St. Peters Rec-Plex recreation and fitness complex. The 236,000 square-foot facility includes 3 ice rinks, 2 gymnasiums, a multipurpose-gym, a natatorium with competition lanes, diving towers and a leisure pool with slide, plenty of recreation classes and more.

MCKELVEY MARKETPLACE

1 mile radius

3 miles radius

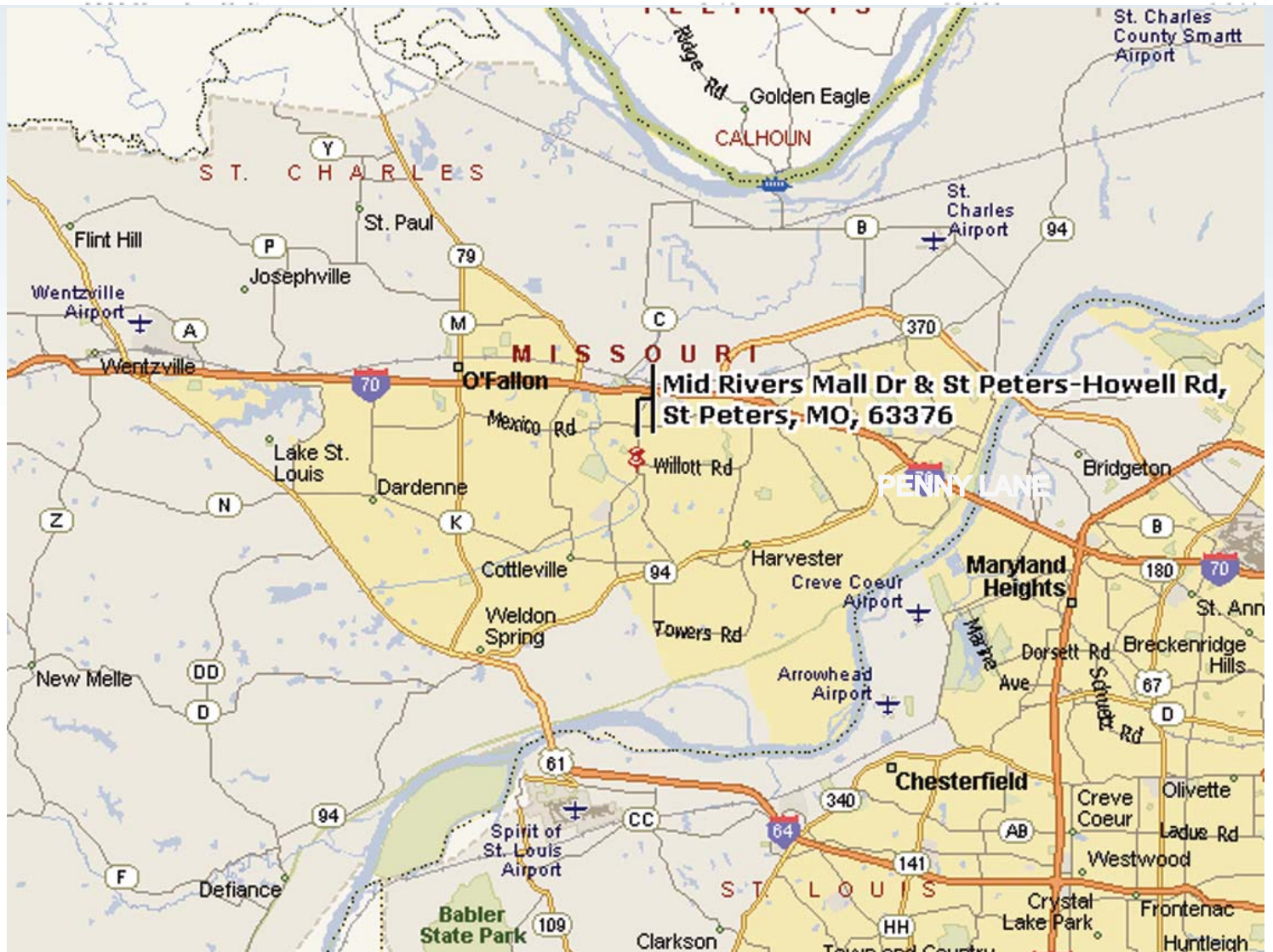
5 miles radius



2000 Total Population	9,345	66,189	159,257
2000 Group Quarters	7	187	808
2010 Total Population	10,370	71,723	182,145
2015 Total Population	10,796	74,687	192,971
2010 - 2015 Annual Rate	0.81%	0.81%	1.16%



2000 Households	3,098	22,590	54,994
2000 Average Household Size	3.01	2.92	2.88
2010 Households	3,566	25,401	64,965
2010 Average Household Size	2.91	2.82	2.79
2015 Households	3,746	26,658	69,399
2015 Average Household Size	2.88	2.79	2.77
2010 - 2015 Annual Rate	0.99%	0.97%	1.33%
2000 Families	2,563	18,146	43,690
2000 Average Family Size	3.33	3.28	3.26
2010 Families	2,868	19,775	50,013
2010 Average Family Size	3.26	3.22	3.21
2015 Families	2,977	20,497	52,733
2015 Average Family Size	3.25	3.22	3.21
2010 - 2015 Annual Rate	0.75%	0.72%	1.06%



No expressed or implied warranty or representation is made as to the accuracy of the information contained herein. This property is submitted subject to errors, omissions, change of price, withdrawal without notice, prior lease or sale and any other listing conditions imposed by the principals.